

**LONDON  
VICTORIA  
GROUPS** 



## **Pavilions Court, 4 Cooks Road**

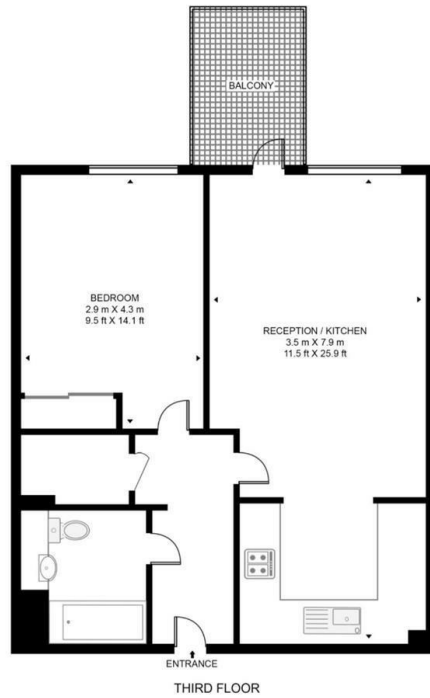
, London E15 2QU

- One-bedroom, one-bathroom apartment
  - Concierge
  - Secure entry system
- Excellent transport links via Bromley-by-Bow
  - CTB-C
- Open-plan living and dining area
  - Gym
  - Communal gardens
  - EPC-B

**£1,850 Per Month**

Local Authority **Newham**  
Council Tax Band **C**  
EPC Rating **B**

PAVILIONS COURT, COOKS ROAD  
APPROXIMATE GROSS INTERNAL FLOOR AREA 554 SQ.FT (51.5 SQ.M)



**London Office Office**  
Spaces Victoria, 25 Wilton Road, Pimlico,  
London, SW1V 1LW

**Contact**  
020 3084 3094  
XL@londonvictoriagroups.co.uk  
www.londonvictoriagroups.co.uk

Agents Note: Whilst every care has been taken to prepare these particulars, they are for guidance purposes only. All measurements are approximate and for general guidance purposes only and whilst every care has been taken to ensure accuracy, they should not be relied upon and potential buyers/tenants are advised to recheck the measurements.

